

Weekly Update of COVID-19 Infections

Data exhibited here is only the figures related to Chiba residents announced by Chiba Municipal Government. As of May 12

1 Latest weekly statistics (with comparison to the previous week) May 4 to May 10		Municipal Data
(1)	Number of newly infected patients (weekly average 956 patients ÷ 7 days)	136.6 (− 48.4)
(2)	Number of newly infected patients (weekly total per 100,000 population)	97.9 (− 34.7)
(3)	Positive rate (weekly average) May 2 to May 8 ※	31.5 % (+ 3.0 points)

※Positive rate shown above is preliminary, and subject to change later.



2 Burden on the Medical Infrastructure (with comparison to the data of May 2, because May 3 was a national holiday)

(1)	Number of hospitalized patients in Chiba City	As of May 10	23 (− 11)
(2)	Current number of patients in medical treatment (serious 0, moderate/mild: 984) As of May 10	Number of People	984(+ 21)
		Per 100,000 people	100.7(+ 2.1)

Note 1) The population of Chiba City is 976,925. (As of Apr. 1, 2022)

Note 2) Above statistics except for 1(1) and 2(1) complies with the definition of the Government of Japan.

Reference Latest weekly statistics in Chiba Prefecture

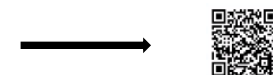
Reference  Latest weekly statistics in Chiba Prefecture			 Prefectural Data
(1)	Classification of infection level (※) As of May 10		Level 2
(2)	Rate of occupancy of hospital beds reserved for patients in Chiba Prefecture (with comparison to the previous week) As of May 10		11.5% (− 2.5 points)
(3)	Rate of occupancy of hospital beds reserved for serious patients in Chiba Prefecture (with comparison to the previous week) As of May 10		4.8% (+ 1.6 points)

※ This is the degree of the infection severity and shortage of medical care capacity in Chiba Prefecture as evaluated by the criteria set by the prefecture.

Level 2: The condition in which the number of new infections is trending upwards and there is an increasing load on medical care for COVID-19 infections and for general medical care, however, adequate medical treatment to those in need is made possible by continually increasing the number of available hospital beds.

(Chiba Prefecture website)

Please refer to the Chiba Prefecture website for information on the above items, medical infrastructure in the prefecture, and criteria for infection evaluation.



Information about COVID-19 Vaccination (May 12)



Information concerning our COVID-19 vaccination system

1. The 4th Vaccination starts from late May

(1) Eligible person

- Those aged 60 and over
- Those aged 18 and over and confirmed by a doctor to have underlying conditions that increase risks for severe infections.

(2) Dosage interval

Five months or more after the 3rd dose

(3) Start of vaccination

From late May
※ Immediately after announced by the national government

(4) Voucher

Will be mailed to people 5 months after they receive the 3rd dose.

2. Vaccination Voucher Mailing Schedule (common to age 12 & over)

Estimated mailing date	May 24 (Tue.) 2022	Jun. 21 (Tue.) 2022	Jul. 5 (Tue.) 2022	Jul. 19 (Tue.) 2022	Aug. 23 (Tue.) 2022
Time of 4th dose (3rd dose)	Dec. 2021 - Jan. 2022	Feb. 1, 2022 ~ Feb. 14, 2022	Feb. 15, 2022 ~ Feb. 28, 2022	Mar. 2022	Apr. 2022
Time of 3rd dose (2nd dose)	Dec. 2021 - Jan. 2022	Feb. 2022		Mar. 2022	Apr. 2022



- ※ The schedule has been moved up.
- ※ It will take several days after the mailing date to receive the vaccination voucher. (excluding Sat., Sun. and holidays.)

3. Vaccination Venue (common to age 12 & over)

- (1) Individual medical institutions : approx. 370 venues.
- (2) Mass vaccinations: as per the chart at right.

Mass Vaccination Venue	Open days				Opening Hours	Vaccine	Eligible Age	Group vaccination Implementation Period
	※ Till July (schedule after Aug. will be announced later.)							
Chiba Chuo Community Center 6F	Till Jul.	Sun.		9:00-17:00	Pfizer	12&over		
		Mon. - Fri.		18:00-21:00				
Hanamigawa Health&Welfare C. 2F	Till Jul.	Sat./Sun.		10:00-17:00			Till May 22 (Sun.)	
ICOAS Chishirodai 2F	Till May 29 (Sun.)	Fri.-Sun.	From Jun.1 (Wed.)	6 days a week (except Tue.)	10:30-18:30			
AEON MALL Makuhari New City Grand Mall 3F. AEON Hall	Till Jun. 19 (Sun.)	Mon. - Sun.	From Jun. 20 (Mon.)	6 days a week (except Thu.)	10:30-19:30	Moderna	18&over	
		Thu.-Sun.	From Jun. 21 (Tue.)	6 days a week (except Mon.)	10:00-19:00			
Soga Community Center 4F	Till Jun. 19 (Sun.)		From Jun. 24 (Fri.)	Fri. - Sun.	10:30-19:30			
ONE's Mall 3F								

Vaccination without prior reservation

(3rd dose) **Till end of May**
 ICOAS Chishirodai (Fri. - Sun.): 14:00 to 17:30
 Soga CC (Thu. - Sun.): 14:00 to 18:00
 Bring voucher, pre-screening questionnaire and ID to the venue.

【Reservation method ※Same for everyone older than 12】

- (1) Chiba City Coronavirus Vaccine Call Center or Reservation Website: **reservations for the general public at individual medical institutions** and **reservations for mass vaccination venues** will be accepted through the call center or the reservation website shown below.
- (2) Local medical institutions: **reservations for "family doctor reservation slots"** will be accepted by each medical institution (your family doctor). Please contact each medical institution (your family doctor) for the reservation method.

<Chiba City Coronavirus Vaccine Call Center>

TEL: 0120-57-8970 8:30-21:00 (Weekdays)
 8:30-18:00 (Saturdays, Sundays and holidays)
 For people with hearing or speaking difficulties:
 FAX 043-245-5128/E-mail cv-call@city.chiba.lg.jp

<Chiba City Coronavirus Vaccination Reservation Website>
 (For new reservations at mass & individual medical venues)



<COVID-19 Vaccine Navi>

(For checking reservation status of individual medical institutions)



<Chiba City Website>

(For the latest information on vaccination)



Requests from the Municipal Government to the Residents (May 12)

The number of new infections declined during the Golden Week holidays, affected by reduced testing in medical institutions. However, that declining trend has been reversed after the holidays. Please continue to thoroughly implement infection prevention measures.

- ✓ Please continue to follow basic infection prevention measures while avoiding “the three C’s”.



- ✓ Please refrain from going to places where infection risk is high such as crowded places.

- ✓ If you are elderly or have chronic diseases, please make efforts to reduce risks for infection, such as only meet in person with a few familiar people.

- ✓ When you dine out, please enjoy a meal with the number of people that can ensure social distancing, with up to four people per table in principle. Also, please continue to take note of the following:



※please use restaurants with Certified or Confirmed status.

- ✓ If you feel even just a little unwell, e.g. fever or tiredness, please refrain from going out and visit a medical institution after consulting by phone in advance.

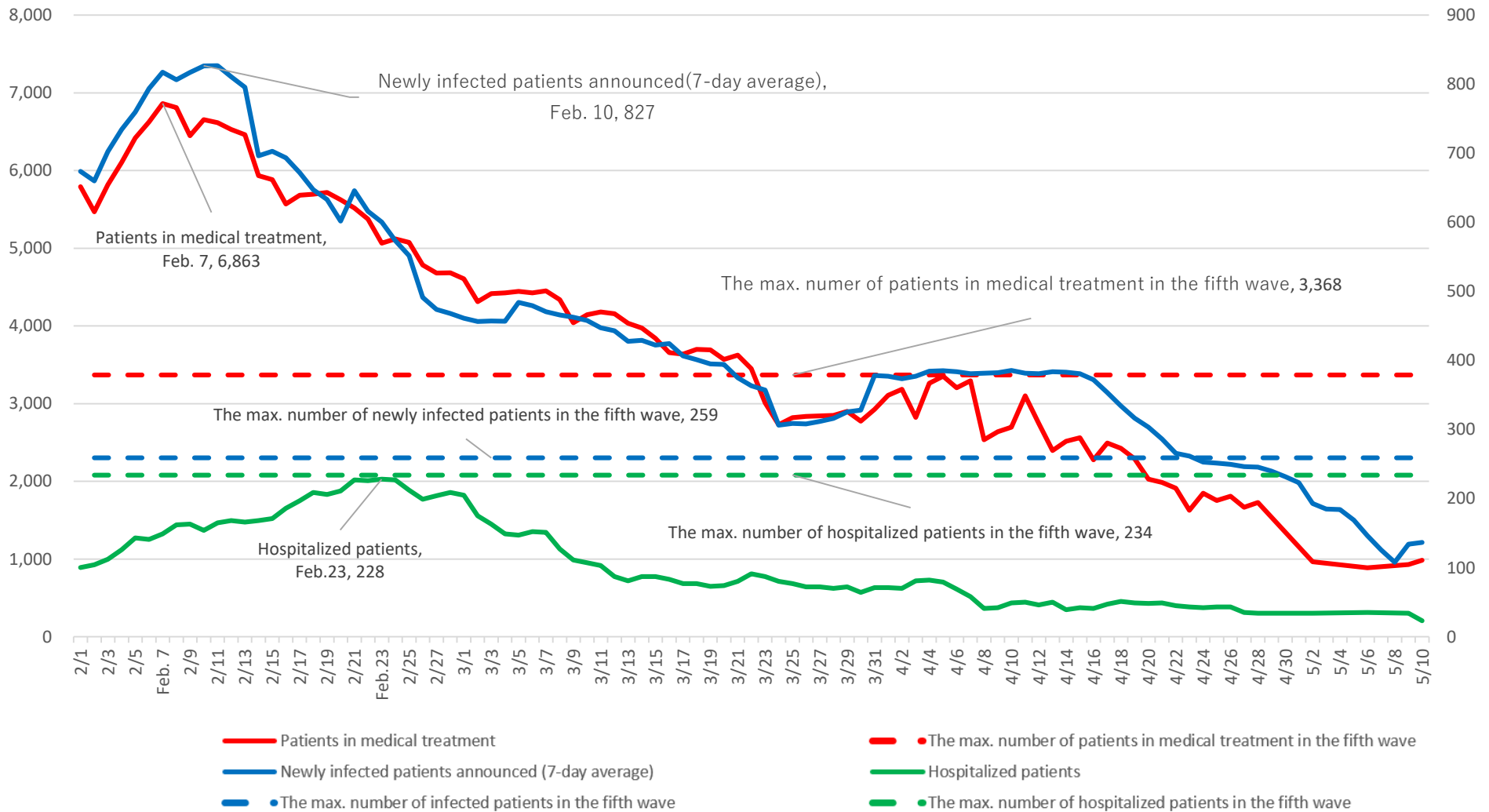


(Chiba City Home page)

Changes in the official tallies of infected patients in Chiba City, in terms of the actual daily number on the day of announcement (7-day average)



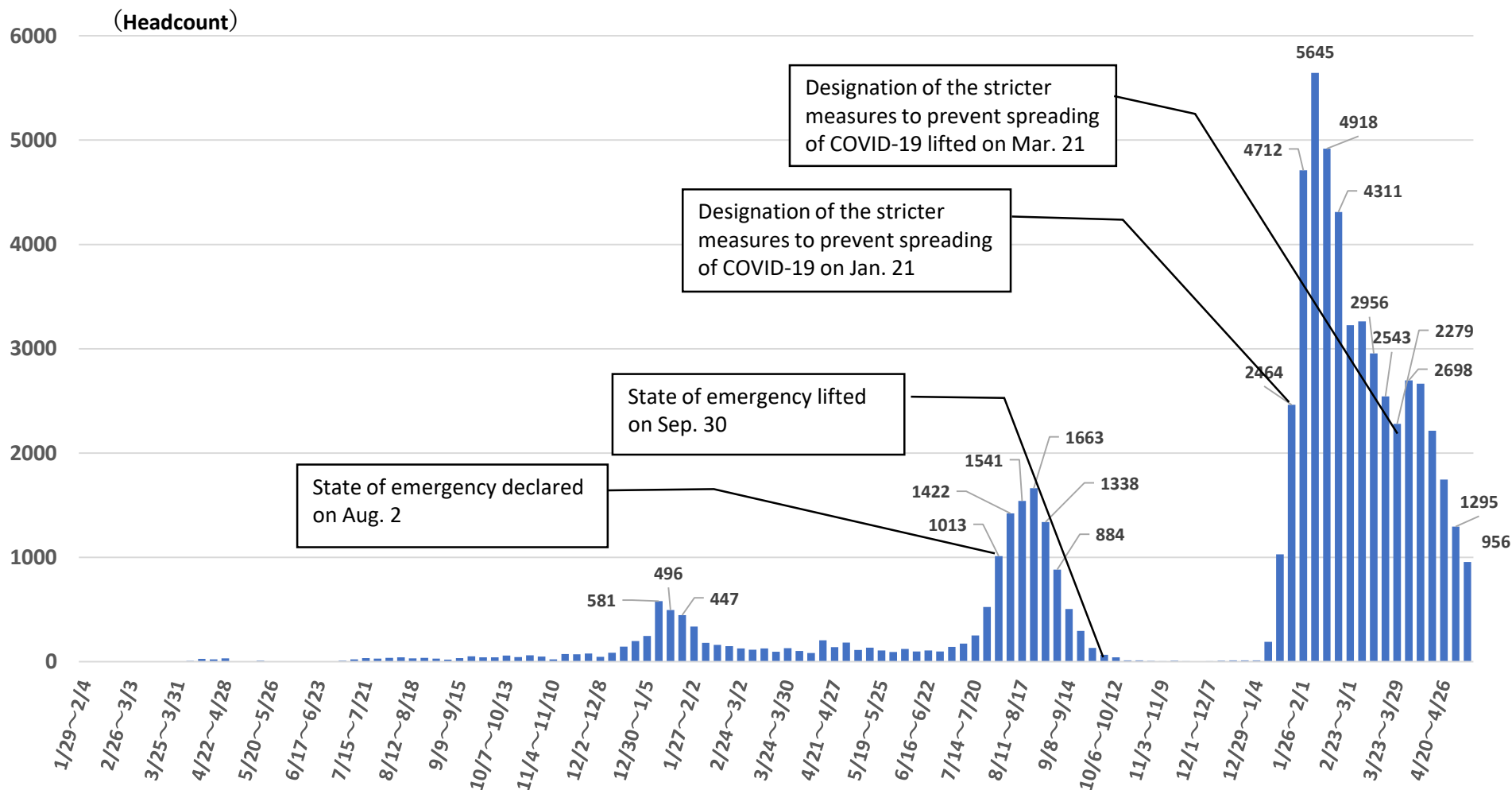
As of May 10



Current Status of Newly Infected Patients in the City (Date of announcement)



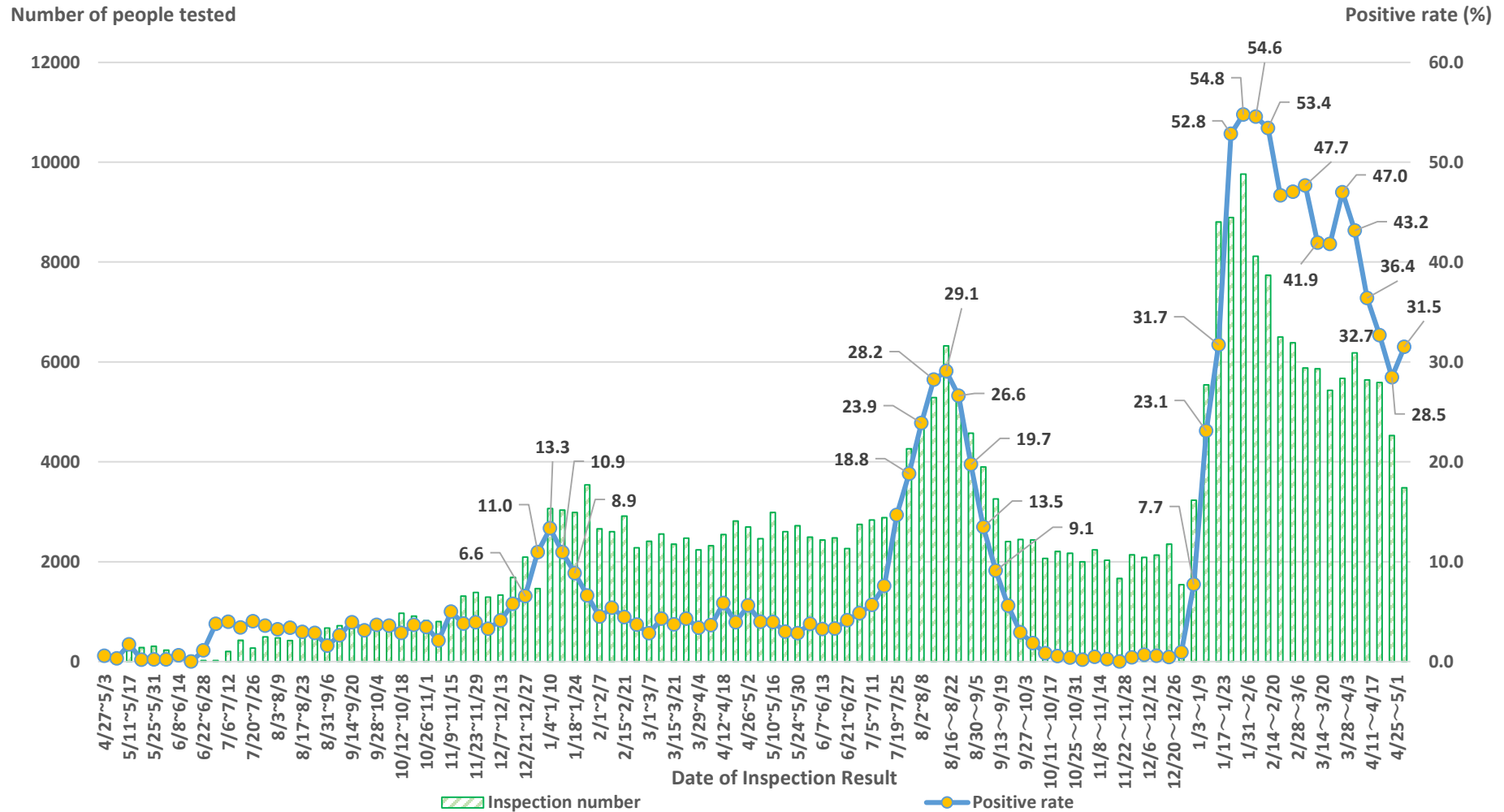
As of May 10



Number of People Tested & Positive Rate of COVID-19



As of May 8



※The results by private institutions are preliminary due to the reporting time lag, are subject to change later.

The Number of Newly Infected Patientes by Age (7-day average)



As of May 10

