

Weekly Update of COVID-19 Infections

Data exhibited here is only the figures related to Chiba residents announced by Chiba Municipal Government. As of Apr. 28

1 Latest weekly statistics (with comparison to the previous week) Apr. 20 to Apr. 26		Municipal Data
(1)	Number of newly infected patients (weekly average 1,746 patients ÷ 7 days)	249.4 (− 66.9)
(2)	Number of newly infected patients (weekly total per 100,000 population)	178.7 (− 47.9)
(3)	Positive rate (weekly average) Apr. 18 to Apr. 24 ※	31.8% (− 4.6 points)

※Positive rate shown above is preliminary, and subject to change later.

2 Burden on the Medical Infrastructure (with comparison to the previous week)

(1)	Number of hospitalized patients in Chiba City	As of Apr. 26	43 (− 6)	
(2)	Current number of patients in medical treatment (serious: 1, moderate/mild: 1,806)	As of Apr. 26	Number of People	1,807(− 484)
			Per 100,000 people	185.0(− 49.5)

Note 1) The population of Chiba City is 976,925. (As of Apr. 1, 2022)

Note 2) Above statistics except for 1(1) and 2(1) complies with the definition of the Government of Japan.

Reference ★ Latest weekly statistics in Chiba Prefecture

Reference ★ Latest weekly statistics in Chiba Prefecture			★ Prefectural Data
(1)	Classification of infection level (※)	As of Apr. 26	Level 2
(2)	Rate of occupancy of hospital beds reserved for patients in Chiba Prefecture (with comparison to the previous week)	As of Apr. 26	15.6% (− 5.5 points)
(3)	Rate of occupancy of hospital beds reserved for serious patients in Chiba Prefecture (with comparison to the previous week)	As of Apr. 26	4.0% (− 2.4 points)

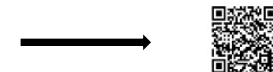
※ This is the degree of the infection severity and shortage of medical care capacity in Chiba Prefecture as evaluated by the criteria set by the prefecture.

Level 2: The condition in which the number of new infections is trending upwards and there is an increasing load on medical care for COVID-19

infections and for general medical care, however, adequate medical treatment to those in need is made possible by continually increasing the number of available hospital beds.

(Chiba Prefecture website)

Please refer to the Chiba Prefecture website for information on the above items, medical infrastructure in the prefecture, and criteria for infection evaluation.



Information about COVID-19 Vaccination (Apr. 28)



Information concerning our COVID-19 vaccination system for the third booster dose

1. Group Vaccination

The third vaccinations are administered for groups of university, company, etc. in the city by using reservation slots of mass vaccination venues.

(1) Eligible person (those who meet all of the requirements below)

- ① Those who study or work in the city (2 or more people per group)
- ② Those who completed the 2nd dose at least 6 months ago
- ③ Those who have the vaccination voucher for the 3rd dose sent by your municipality of residence (including municipalities other than Chiba City)
- ④ Those who age 12 & over for Pfizer/age 18 & over for Moderna

※The application can be accepted within availability of reservation slots.
 ※Those who live outside Chiba City can also get vaccinations, if studying or working in the city.
 ※Those who belong to various groups such as vocational schools and clubs can get vaccinations.
 ※The application deadline, which used to be at 13:00 of four days prior to your preferred Vaccination date, may be extended to one day before. Please inquire to the call center.

(2) Application method

Please download the "Group Vaccination Application and Applicant List Form" from the city website, fill in necessary items and email it to the call center (cv-call@city.chiba.lg.jp) by 13:00 four days prior to your preferred vaccination date. FAX is also accepted.

※ Chiba City Website https://www.city.chiba.jp/hokenfukushi/iryoeisei/seisaku/covid19-vaccine_group-vaccination.html

2. Vaccination Venue (common to age 12 & over)

- (1) Individual vaccinations: approx. 370 venues
- (2) Mass vaccinations: the schedule as shown in the right table

Vaccination without prior reservation:

Bring voucher, pre-screening questionnaire and ID to the venue.
 ICOAS Chishirodai ※everyday (Fri. – Sun. from May):14:00 to 17:30
 Soga CC ※Thu. – Sun. :14:00 to 18:00
 ONE'S Mall ※Fri.– Sun. (by the end of Apr.) :14:30 to 18:30

Mass Vaccination Venue	Open days		Opening Hours	Vaccine	Eligible Age	Group Vaccination Implementation Period
	Apr.	May				
Chiba Chuo Community Center 6F	Mon. – Fri.	Mon. – Fri.	18:00-21:00	Pfizer	12&over	Apr. 23, Sat. – May 22, Sun.
	Sun.	Sun.	9:00-17:00			
Hanamigawa Health & Welfare C. 2F	Sat./Sun.	Sat./Sun.	10:00-17:00	Moderna	18&over	Apr. 22, Fri. – May 27, Fri.
ICOAS Chishirodai 2F	Everyday	Fri. – Sun.	10:30-18:30			
AEON MALL Makuhari New City	Mon./	Mon./	10:30-19:30	Moderna	18&over	Apr. 22, Fri. – Apr. 30, Sat.
Grand Mall 3F, AEON Hall	Fri. – Sun.	Fri. – Sun.	10:00-19:00			
Soga Community Center 4F	Thu. – Sun.	Thu. – Sun.	10:00-19:00			
ONE's Mall 3F	Fri. – Sun.		10:30-19:30			

3. Voucher Mailing Schedule (common to age 12 & over)

Estimated mailing date	Already mailed	May 24 (Tue.)	Jun. 21 (Tue.)	Jul. 19 (Tue.)	Aug. 23 (Tue.)
Time of 2nd dose	Before Nov. 2021	Dec. 2021	Jan. 2022	Feb. 2022	Mar. 2022

【Reservation method ※Same for everyone older than 12】

※It will take several days after the mailing date to receive the vaccination voucher.(excluding Sat., Sun. and holidays.)



- (1) Chiba City Coronavirus Vaccine Call Center or Reservation Website: **reservations for the general public at individual medical institutions** and **reservations for mass vaccination venues** will be accepted through the call center or the reservation website shown below.
- (2) Local medical institutions: **reservations for "family doctor reservation slots"** will be accepted by each medical institution (your family doctor). Please contact each medical institution (your family doctor) for the reservation method.

<Chiba City Coronavirus Vaccine Call Center>

TEL: 0120-57-8970 8:30-21:00 (Weekdays)
 8:30-18:00 (Saturdays, Sundays and holidays)
 For people with hearing or speaking difficulties:
 FAX 043-245-5128/E-mail cv-call@city.chiba.lg.jp

<Chiba City Coronavirus Vaccination Reservation Website>
 (For new reservations at mass & individual medical venues)



<COVID-19 Vaccine Navi>

(For checking reservation status of individual medical institutions)



<Chiba City Website>

(For the latest information on vaccination)



Requests from the Municipal Government to the Residents (Apr. 28)

The number of newly infected people has been declining since last week, but it is still as high as the peak of the 5th wave in last summer. As we enter the Golden Week consecutive holidays, please continue to relentlessly implement infection prevention measures thoroughly.

- ✓ Please continue to follow basic infection prevention measures while avoiding “the three C’s”.



- ✓ Please refrain from going to places where infection risk is high such as crowded places.

- ✓ If you are elderly or have chronic diseases, please make efforts to reduce risks for infection, such as only meet in person with a few familiar people.

- ✓ When you dine out, please enjoy a meal with the number of people that can ensure social distancing, with up to four people per table in principle. Also, please continue to take note of the following:



※please use restaurants with Certified, or Confirmed status.

- ✓ If you feel even just a little unwell, e.g. fever or tiredness, please refrain from going out and visit a medical institution after consulting by phone in advance.

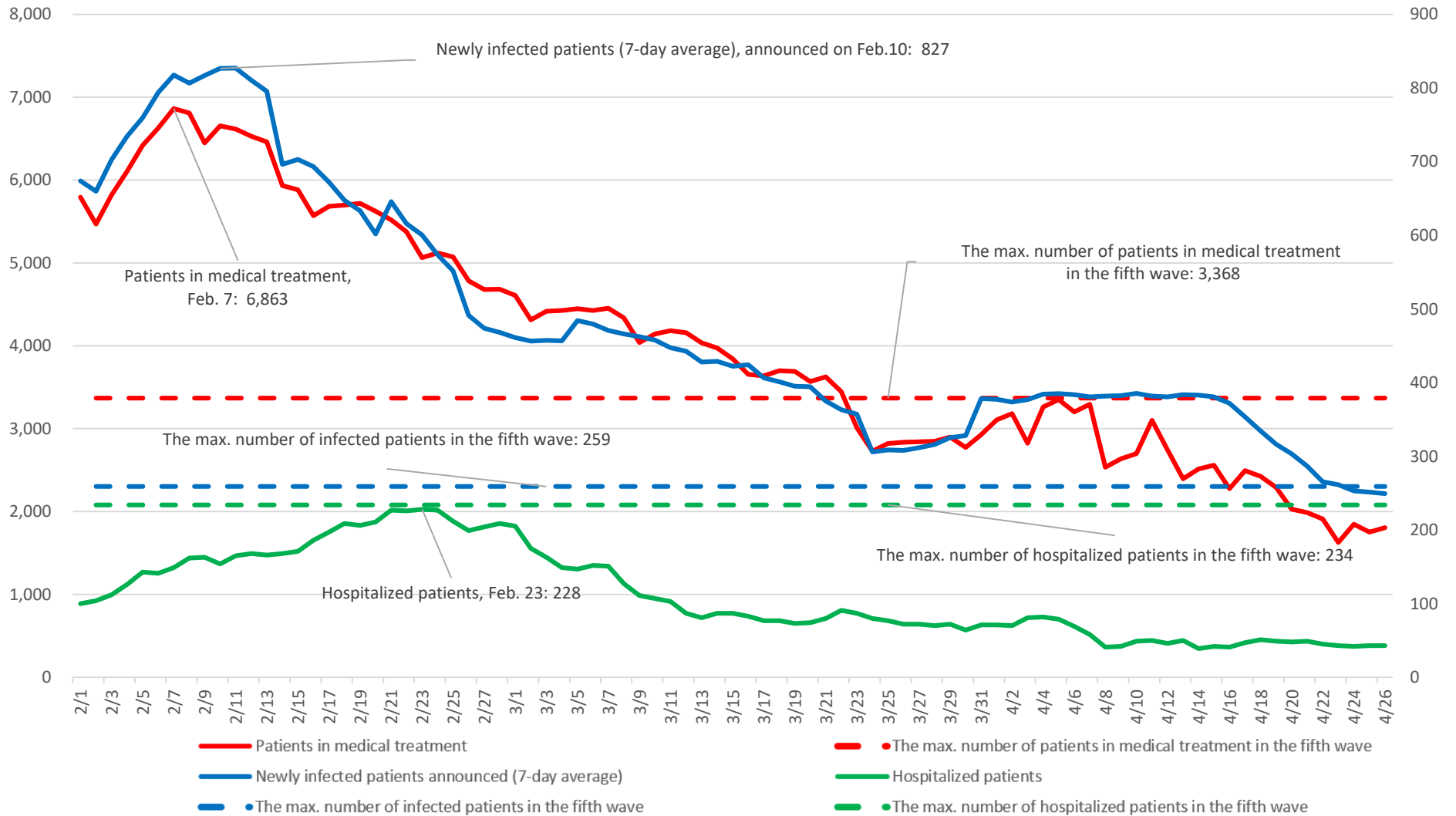


(Chiba City Home page)

Changes in the official tallies of infected patients in Chiba City, in terms of the actual daily number on the day of announcement (7-day average)



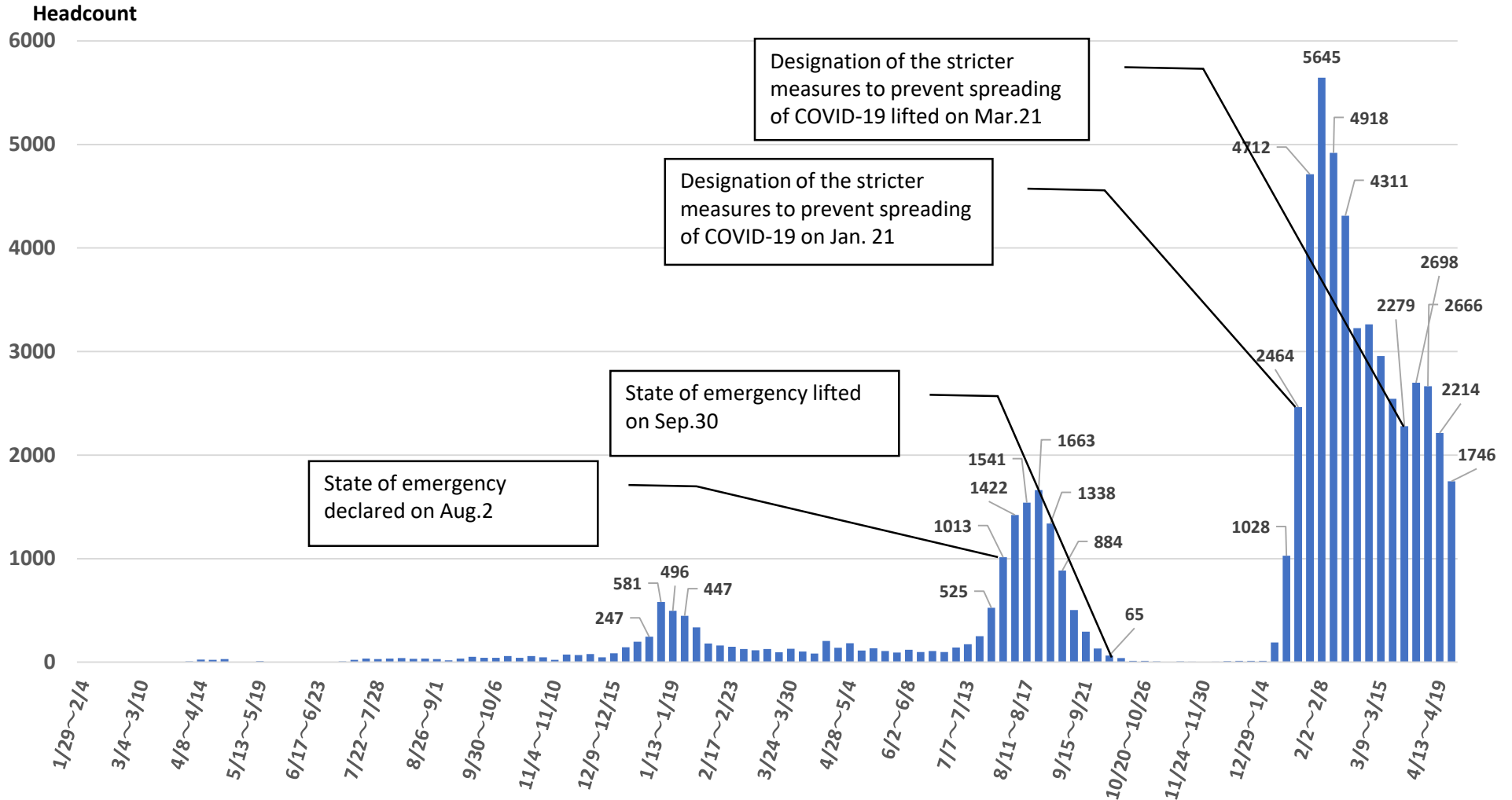
As of Apr. 26



Current Status of Newly Infected Patients in the City (Date of announcement)



As of Apr. 26



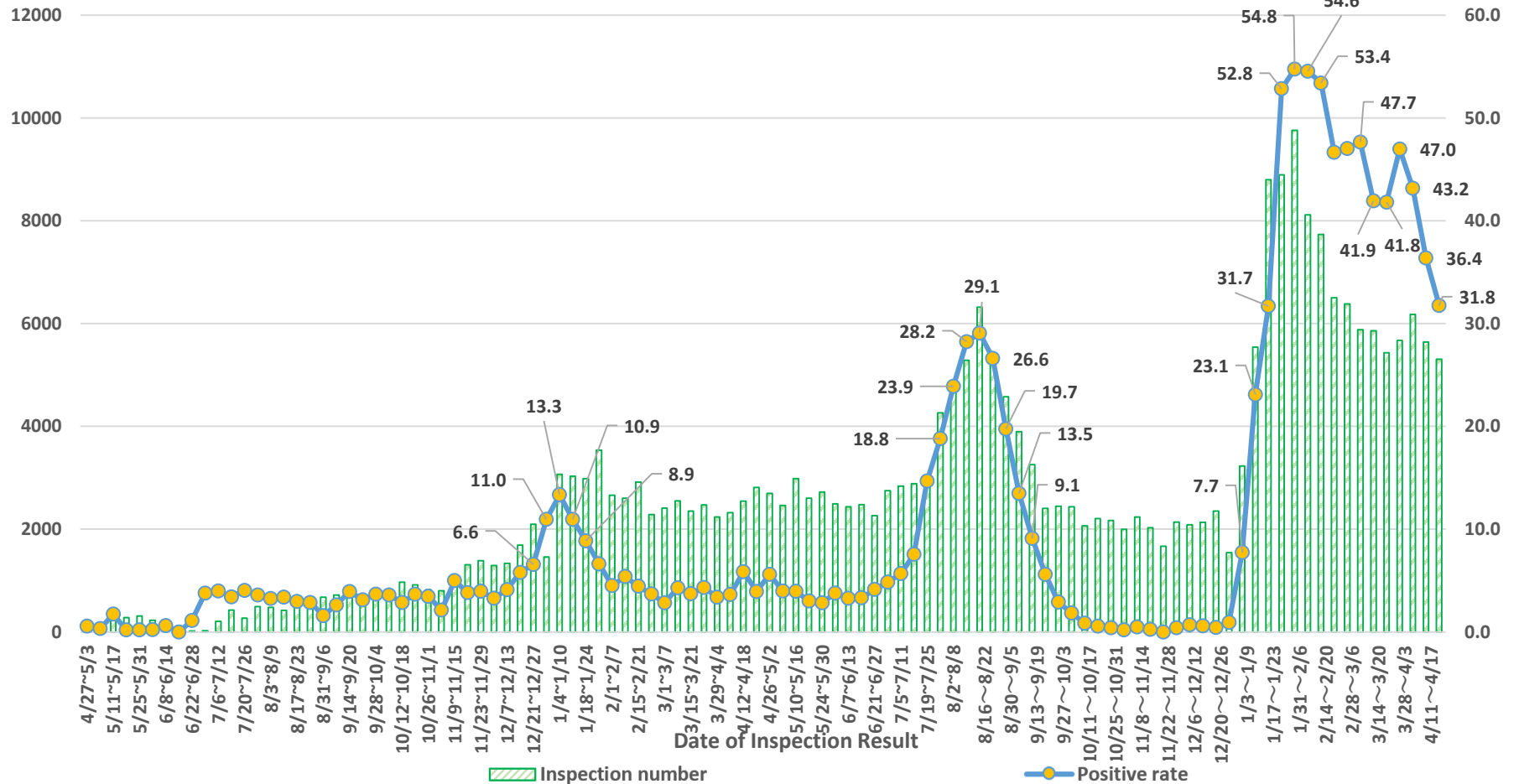
Number of People Tested by Private / Public Institutions & Positive Rate of COVID-19



As of Apr. 24

Number of people tested

Positive rate (%)



※ The results by private institutions are preliminary due to the reporting time lag, are subject to change later.

The Number of Newly Infected Patientes by Age (7-day average)



As of Apr. 26

Over the last two weeks, it is on a downward trend in most age groups, but slightly increasing in the ones of under ten and of teenagers.

