



Chiba City ・ ちば

2014 7月号
英語版
English Edition
July 2014

No.109

発行：(公財) 千葉市国際交流協会
Issued by: Chiba City International Association
〒260-0013 千葉市中央区中央 2-5-1 千葉中央ツインビル 2号館 8階
Chiba Chuo Twin Building 2nd Tower 8F
2-5-1 Chuo, Chuo-ku, Chiba City
TEL : 043-202-3000 FAX : 043-202-3111
Monday to Friday from 9:00 – 20:00; Saturday from 9:00 – 17:00
ホームページ HP : <http://www.ccia-chiba.or.jp/>
フェイスブック FB: <http://www.facebook.com/ccia1994>

この情報誌は、下記のアドレスよりダウンロードすることができます。

This newsletter is available at:

<http://www.ccia-chiba.or.jp/005003jyoho/index.html>

ちばし ちばし 千葉市からのお知らせ CITY NEWS

「ちばし ひなんこうどう ようしえんしゃ めいぼ 千葉市 避難行動 要支援者 名簿」について Chiba City Evacuation Assistance Register Information

During a disaster, the elderly, people with disability and foreigners who do not speak Japanese are likely to become victims. To help these people, the city created a list, the Chiba City Evacuation Assistance Register. The list will be passed on to the neighborhood association of your area of residence so that the people nearby will know who may be need of help. If you do not speak Japanese and want to be included in the list, fill in and submit the application form to be distributed at the City of Chiba International Relations Division's or Chiba City International Association's counter starting August 1.



Inquiry: 危機管理課 Crisis Management Division
☎245-5151

ほし ふしかてい いりょうひ じよせい 母子・父子家庭に 医療費を 助成します Medical Subsidy for Single-parent Household

The City provide medical subsidy for single-parent household. Those with children ages 18 and younger may avail the subsidy. Application is required. Please ask the Healthy Child Development Division for qualification,

application procedure, and subsidy detail.

Inquiry: 健全育成課 Healthy Child Development Division ☎245-5179

にゅうえんりょう ほいくりょう いちぶ じよせい 入園料・保育料の 一部を 助成します Partial Subsidy for Students or Incoming Students

A partial subsidy is provided (fee and admission fee) to those kindergarten students of private schools or those incoming students enrolling by the end of November.

Target: guardians of students 3 to 5 years old (born between April 2, 2008 and April 1, 2011), who live in Chiba City and attending city authorized private kindergarten (including those outside the city). Even the child is not attending a kindergarten yet but is planning to enroll by the end of November can also avail.

Amount grant: depend on the family's city tax for 2016 and the number of dependents.

Admission Form: distributed at the kindergartens
Application Procedure: submit via your child's kindergarten

Inquiry: こども企画課 Child and Domestic Affairs Division ☎245-5659

こそだ おうえん 子育てを 応援します We Support Parenting

Chiba City introduces support services needed to help parents with work or daily lives:

- ① 「Special Daycare Centers」 for parents working a part-time job 2-3 days a week

② 「Holiday Daycare Centers」 for parents working on Sundays and Holidays

③ 「Temporary Custody Daycare Centers」 for emergencies

④ 「Family Support Centers」 offers pick and drop off in emergency cases

⑤ 「Twilight Stay/Night Stay」 for nights or holidays

⑥ 「Angel Helper」 for parents to support pre and post childbirth

⑦ 「Daycare Centers for Sick Children」 for parents with sick children

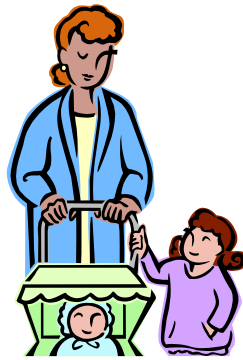
Please ask for qualification, time and fee details.

①②③ ^{ほいくくわんえい} 保育運営課 Child Care Administration Division ☎245-5729

④⑦ ^{ほいくしえん} 保育支援課 Child Care Support Division ☎245-5105

⑤ ^{けんぜんいくせい} 健全育成課 Healthy Child Development Division ☎245-5179

⑥ ^{ほいくしえん} 保育支援課 Child Care Support Division ☎245-5180



^{こくみんねんきん} 国民年金からの おしらせ

National Pension Announcement

① Don't forget to submit your status report. The status report form is being sent to those receiving the Disability Basic Pension. Please complete the form and send it back until Thursday, July 31. Failing to submit the form on time may cause a non-payment of the amount. Also, if you are not done yet with the report of the income for the year 2013, please submit it with this form.

② Exception from the payment of contribution was expanded. Those who cannot afford to pay the contribution fee due to loss of job may avail the Exemption of the Contributions or Contribution Postponement System for low Income Youth. It is now possible to apply for the exception back up to even 2 years and 1 month. Please ask the district office, Health Insurance and Pension Division for details.

Inquiry/Apply: ^{くやくじょほけんねんきん} 区役所保険年金課 Each district office's Health Insurance and Pension Division Chuo-ku ☎221-2133 Wakaba-ku ☎233-8133 Hanamigawa-ku ☎275-6278 Midori-ku ☎292-8121

Inage-ku ☎284-6121 Mihama-ku ☎270-3133

^{こうかがく} 光化学スモッグに注意!!

Beware of the Photochemical Smog!!

The photochemical smog is very common in this season. When an advisory is released, public announcement is made through the public disaster prevention wireless system. Or you may also check the following:

★Telephone Service/Hotline ☎238-7491/7492

★Chiba City Safety Email (using your cellphone)

To apply for the service: <http://www.chiba-an.jp/>

★Chiba Prefecture's HP:

<http://www.taiki.pref.chiba.lg.jp/>

Please be aware of the following when an advisory or symptoms occur:

★When an advisory is released

• Close windows and avoid going out

• Avoid heavy workout outside the house

• Avoid the use of vehicles

★When symptoms occur

• Wash your eyes if feel pain in the eye

• Gurgle if you feel irregularity in your throat or nose

• Free your chest and relax if feel hard in breathing

• Go to the hospital if symptoms persist

Inquiry: ^{かんきょうきせい} 環境規制課 Environmental Regulation Division ☎245-5189

^{まくはり} 幕張 ^{はなび} ビーチ花火フェスタ

Makuhari Beach Fireworks Festa

The fireworks display that many residents look for-ku to is taking place again this year. Roughly 15,000 fireworks will be released, including new large fireworks and fireworks with music.

When: Saturday, August 2 from 19:30 - 20:30. Will be canceled in the case of severe weather or strong winds.

Where: ^{まくはりかいひんこうえん} 幕張海浜公園

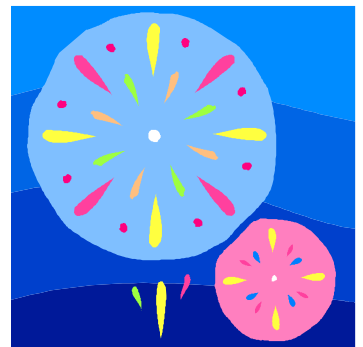
(^{みはま} 美浜区美浜 1)

Makuhari Seaside Park (Mihama-ku Mihama 1)

The show can be watched freely. Tickets for special seating areas are also available for 1,500 yen - 4,000 yen per person.

Inquiry: ^{ちばしみんはなびたいかいじつこういんかい} 千葉市民花火大会実行委員会

Chiba City Residents' Fireworks Executive Committee ☎222-0300



行って みましよう EVENTS

み るところが いっぱい! 動物公園

So Many Things to See at the Zoological Park!

There are many fun things to see and do at the Zoological Park. There are over 140 species of animals to see, and you can even interact with them.

There are also many fun events to learn about how animals live, etc.



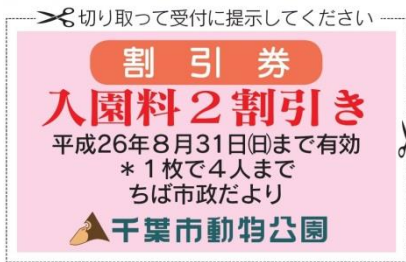
Fun Things to See

- ① Jitto and Shizuka, the shoe-billed storks, are quickly rising in popularity. Their faces look tough, but they are birds with very kind personalities. As an endangered species, they are very precious birds.
- ② Cute babies. Many new friends are being born. Recently born baby animals include goats, mouflons, and capuchin monkeys.
- ③ The Animal Science Center is a hidden spot. An artificial strong rain falls every day at 14:40, and the birds taking flight all at once look very beautiful.

There are many other fun events as well. Please inquire for more details.

Hours: 9:30 - 16:30 (Last entrance is 16:00)

Admission: 500 yen for adults, 100 yen for elementary/junior high school students, free for city residents aged 65 and older. Bring in the coupon on the right for a 20% discount for up to 4 people. The coupon is valid until Sunday, August 31.



Inquiry: 動物公園(若葉区源町) Zoological Park (Wakaba-ku Minamotocho) ☎252-1111
Closed Mondays

市女性グループ連絡会 夏休み親子体験教室 Summer Family Activities with the Chiba City Women's Group Liaison Committee

- ① Make 2 kinds of origami pandas
Wednesday, July 23 from 13:00 - 15:00
- ② Make a decorative cat plate with scallop shells
Thursday, July 31 from 10:00 - 12:30

Where: 中央コミュニティセンター5階
Chuo Community Center, 5F

Target: Elementary school students and their guardians

Limit: First 10 groups (20 people)

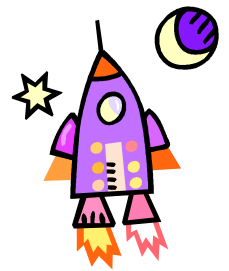
Fee: ①100 yen ②600 yen

Applications/Inquiry: 市女性グループ連絡会
Chiba City Women's Group Liaison Committee
☎090-8501-5937 Weekdays from 9:30 - 16:00

「宇宙の日」記念全国小・中学生作文 絵画コンテスト

Space Day National Elementary/Junior High School Essay and Artwork Contest

The contest is seeking submissions with the theme 'Space Exploration'. Submissions must be original works that have not been previously released. Please inquire for more details. Submissions must be received by Thursday, July 31. Please attach a paper with 'Space Day Submission', your address, name (including furigana), grade, phone and fax numbers, and school written on it to the back of your work.



Submissions: 科学館 Museum of Science
〒260-0013 Chuo-ku Chuo 4-5-1

Inquiry: 科学館 Museum of Science ☎308-0511

市営プールがオープンします!! Municipal Pools Are Opening!

It's almost summer vacation, and municipal pools will be open again this year. Please make lots of fun memories with your family and friends!
★Inage Seaside Park Pool
Open from Saturday, July 19 to Sunday, August 31. With 14 types of pool facilities, including a new pool, everybody from children to adults can enjoy a day at the pool. Pool users can also freely enter Inage Beach (swimming area).



Fee: 1,100 yen for adults, 800 yen for high school students, 400 yen for elementary/junior high school students, 200 yen for pre-school children aged 4 and older
Discount tickets can be bought in advance from convenience stores that handle JTB tickets.

Inquiry: みどりの^{きょうかい}協会 Greenery Association
☎247-2711

★Other Municipal Pools

- ① Chiba Park Swimming Pool (Chuo-ku)
☎253-7844
- ② Chuo Community Center Indoor Heated Pool (Chuo-ku) ☎245-5724
- ③ Kotehashi Heated Pool (Hanamigawa-ku)
☎216-0090
- ④ Kitayatsu Heated Pool (Wakaba-ku) ☎228-5000
- ⑤ Mitsuwadai Park No. 2 Swimming Pool (Wakaba-ku) ☎254-0105
- ⑥ Furuichiba Park Swimming Pool (Midori-ku) ☎265-3005
- ⑦ Ariyoshi Park Swimming Pool (Midori-ku)
☎291-1800
- ⑧ Saiwaicho Park Swimming Pool (Mihama-ku) ☎241-5305

Fee: 220 yen for adults (300 yen for heated pools), 100 yen for junior/senior high school students (200 yen for heated pools), 70 yen for elementary school students and under (100 yen for heated pools)

*The open season and hours vary by pool. Please call each pool for details.

なんぶせいしょうねん
南部青少年センターの講座「英語で遊ぼう」
'Let's Play In English' at the Nanbu Youth Center

When: Jul 23 (Wed) – Jul 26 (Sat) from 10:00 - 11:00

Target: Elementary school students

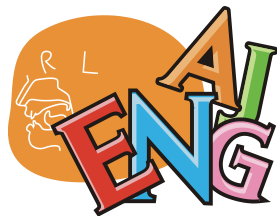
Limit: First 20 people each time

Fee: 200 yen

Applications/Inquiry: 南部

せいしょうねん
青少年センター

ちゅうおうくしらはた
(中央区白旗1-3)



Nanbu Youth Center (Chuo-ku Shirahata 1-3) ☎

264-8995

Closed on Mondays, holidays, and July 22 (Tue)

かくしゆ そろだん
各種 相談

Consultations

じよせい けんこうそろだん
女性のための健康相談

Health Consultations for Women

Consultation is available for those with mental and physical concerns related to female hormones, etc.

①Phone consultations with a nurse

Every week from Mon – Fri (closed on holidays)
9:00 - 12:00, 13:00 - 16:00

②Interview consultations with a female doctor (gynecology)

Jul 23 (Wed) from 13:15 - 15:20

Where: 市保健所(美浜区幸町1) City Health Center (Mihama-ku Saiwaicho 1)

Reservations (by phone) are required.

Applications/Consultations/Inquiry: けんこうしえんか
Health Support Division ☎238-1220

がいこくじん むりょうほうりつそろだん
外国人のための無料法律相談

Legal Consultation for Foreigners

When: Monday, July 28 from 13:00 - 16:00

Where: ちばしこくさいこうりゅうプラザ 会議室
(中央区中央2)

Chiba City International Communication Plaza, Conference Room (Chuo-ku Chuo 2)

Limit: First 4 people

Applications are required. Please consult in advance if you would like an interpreter.

Applications are required. Please consult in advance if you would like an interpreter.

Applications are required. Please consult in advance if you would like an interpreter.

Applications are required. Please consult in advance if you would like an interpreter.

Applications are required. Please consult in advance if you would like an interpreter.

Applications are required. Please consult in advance if you would like an interpreter.

Applications/Inquiry: ちばしこくさいこうりゅうきょうかい
Chiba City International Association ☎202-3000



Seven Bank International Money Transfer Service

You can transfer money,
24hours a day,
365days a year

Money can be
received in a
few minutes !

The receivers will be able to
collect money at 490,000
receiving locations affiliated
with Western Union
in about 200 countries.

Inquiries about the Account and International Money Transfer Service of Seven Bank[10:00-20:00 Sunday-Friday except for the National Holidays, Dec 31 to January 3]
<http://www.sevenbank.co.jp/soukin/en/>

0120-033-253

Free

SEVEN BANK