




# Weekly Update of COVID-19 Infections



Data exhibited here is only the figures related to Chiba citizens


As of Mar. 11

## Latest weekly statistics (with comparison to the previous week)





	Number of newly infected patients per 100 thousand citizens	Mar. 3 to Mar. 9	<b>11.5 (-1.5)</b>
	Municipal positive rate of COVID-19 (weekly average)	Mar. 1 to Mar. 7 ※	<b>3.1% (-0.6points)</b>
	Prefectural positive rate of COVID-19 (weekly average)	Feb. 28 to Mar. 6 ※	<b>5.1% (+0.5points)</b>

※Positive rate shown above is preliminary, and subject to change later.

## Current status of newly infected patients (with comparison to the previous week)

	Number of citizens newly infected	As of Mar. 9	<b>Serious</b>	<b>2 (-1)</b>
			<b>Moderate/Mild</b>	<b>166 (-33)</b>

## Current status of hospital occupancy

	Municipal COVID-19 alert level in terms of hospital occupancy (Stage 0 to 4)	As of Mar. 7	<b>Stage 4</b>
	Prefectural hospital bed securement plan (Phase 1 to 4-2)	As of Mar. 7	<b>Phase 4-2</b>
	Prefectural hospital occupancy rate (with comparison to the previous week)	As of Mar. 4	<b>47% (-3 points)</b>
	Prefectural hospital occupancy rate for serious patients (with comparison to the previous week)	As of Mar. 4	<b>23% (± 0 points)</b>

## Requests from the Municipal Government to the citizens (As of Mar. 11)



- The state of emergency has been extended again to March 21. The Municipal Government requests the citizens to follow the instructions below:
  - ① Refrain from going out even in daytime except for essential reasons, especially stay home after 20:00.
  - ② Keep silent while eating and wear a mask when you talk.
  - ③ Do not be misled by uncertain information on infection prevention.
  - ④ Please make efforts to maintain good physical and mental health by taking appropriate preventive measures and moderate exercise.
- We are coming in the midst of high-season of social gatherings such as testimonial party, welcome & farewell party, and cherry-blossom viewing, spring break outings etc. However, please refrain from eating and drinking, having home parties, and taking trips, especially with persons other than your family members living with you.
- To prevent the spread of infection, municipal facilities have suspended services at night and continued to close or limit the use. Please refer to the facility's web page or confirm with the facility/the event promoter prior to your visit.

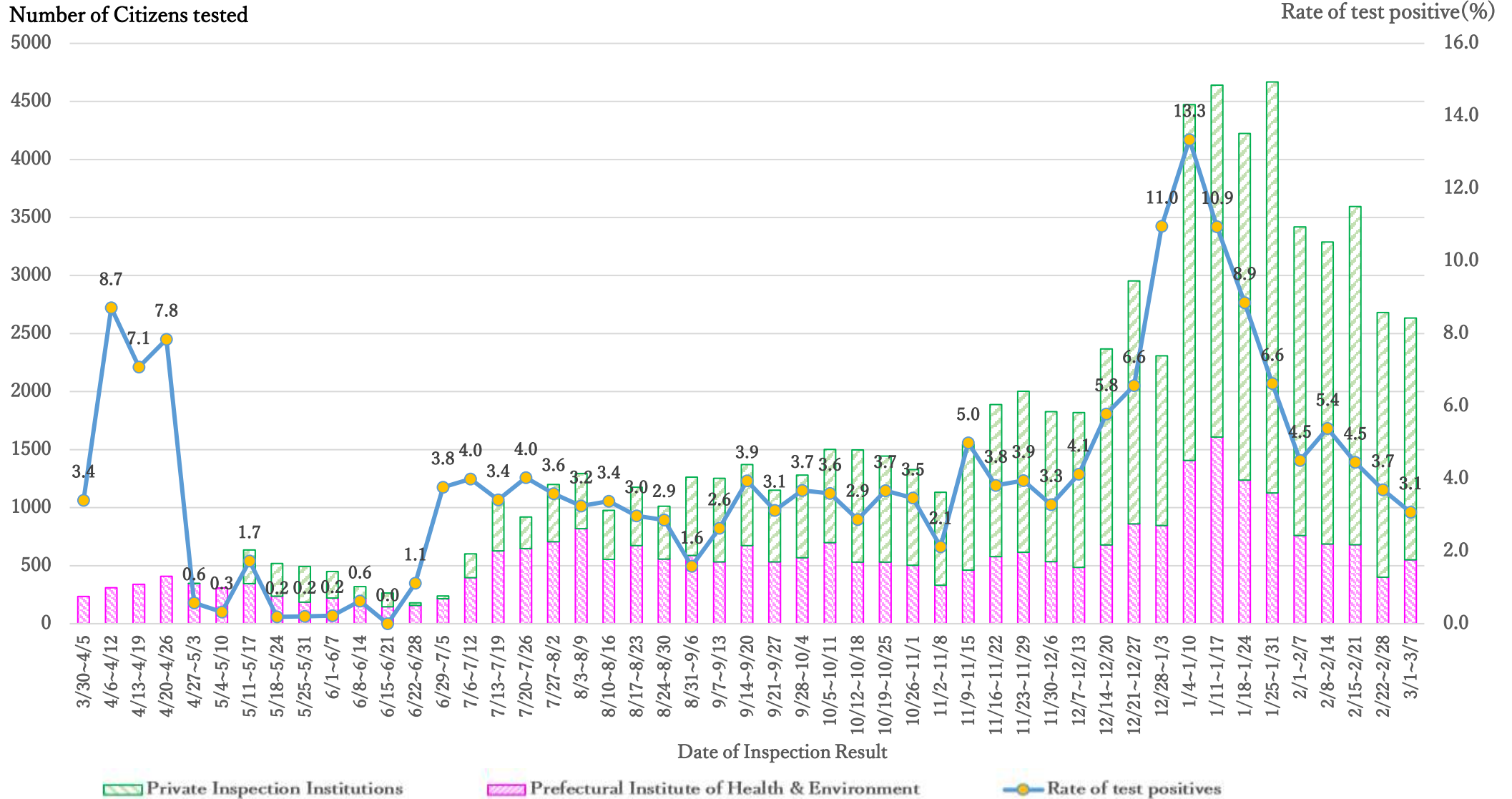


The behavior you should NOT do to prevent from spreading infection (Example)

After commencement, eating and chatting without wearing a mask at a restaurant or home.

# Number of Citizens Tested by Private/Public Institutions & Positive Rate of COVID-19

As of Mar. 7



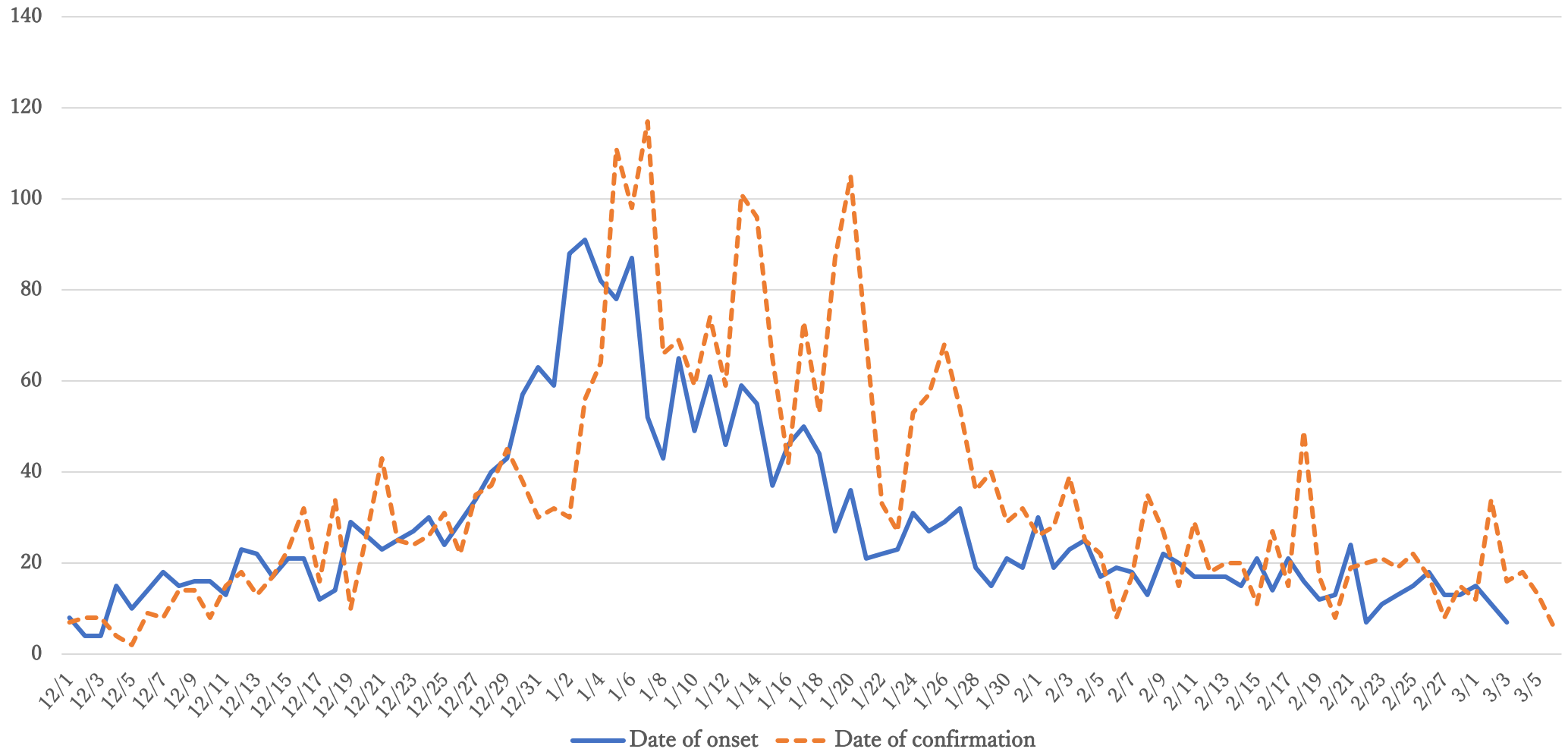
※The test results by private inspection institutions are preliminary due to the reporting time lag, therefore, are subject to change later.

# Number of Newly Infected Citizens (Date of onset/Date of confirmation)



Up to the announcement of Mar. 9

Head count

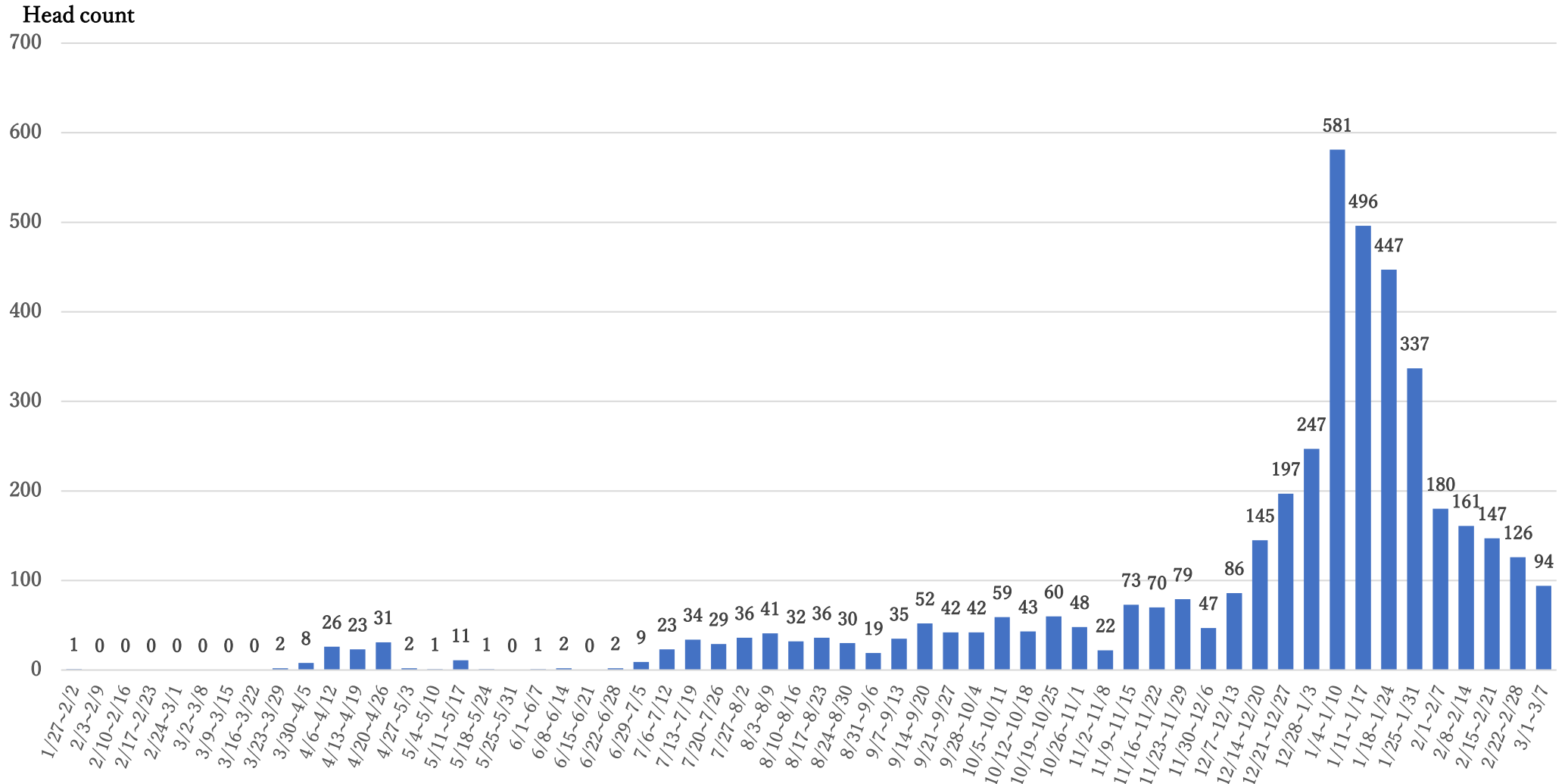


※The figures are based on only the head count already announced and are subject to change later.

# Current Status of Newly Infected Citizens (Date of confirmation)



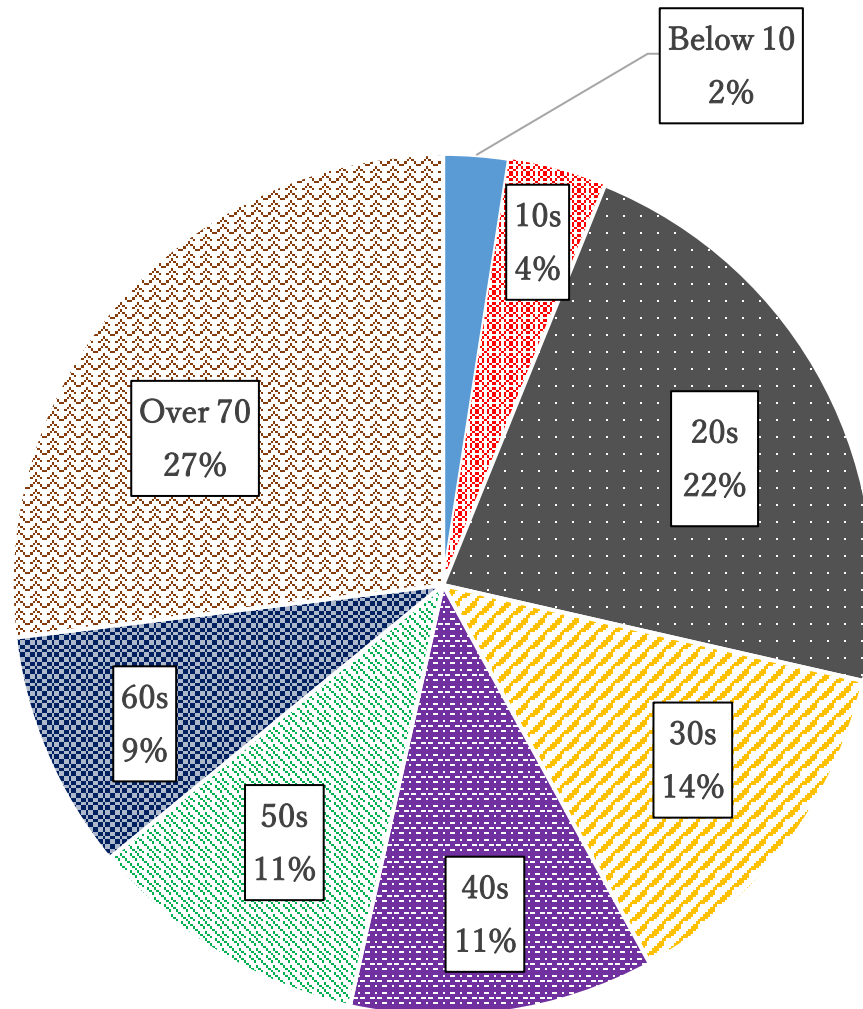
As of Mar. 7



※The figures above are based only on the head count already announced and are subject to change later.

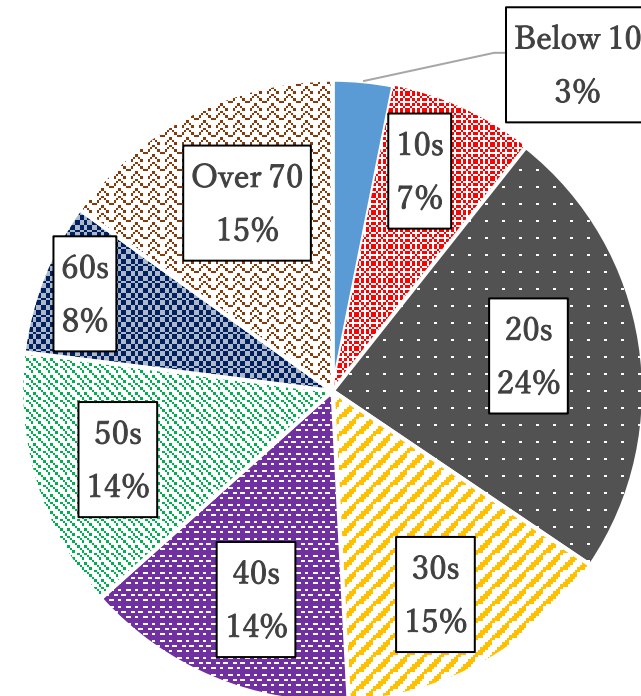
# The Breakdown of Newly Infected Citizens by Age

Last 2 weeks (Feb. 22 to Mar. 7)



Over the last two weeks, mass infection occurring at nursing homes pushed up the ratio of the infected patients over 70 years old.

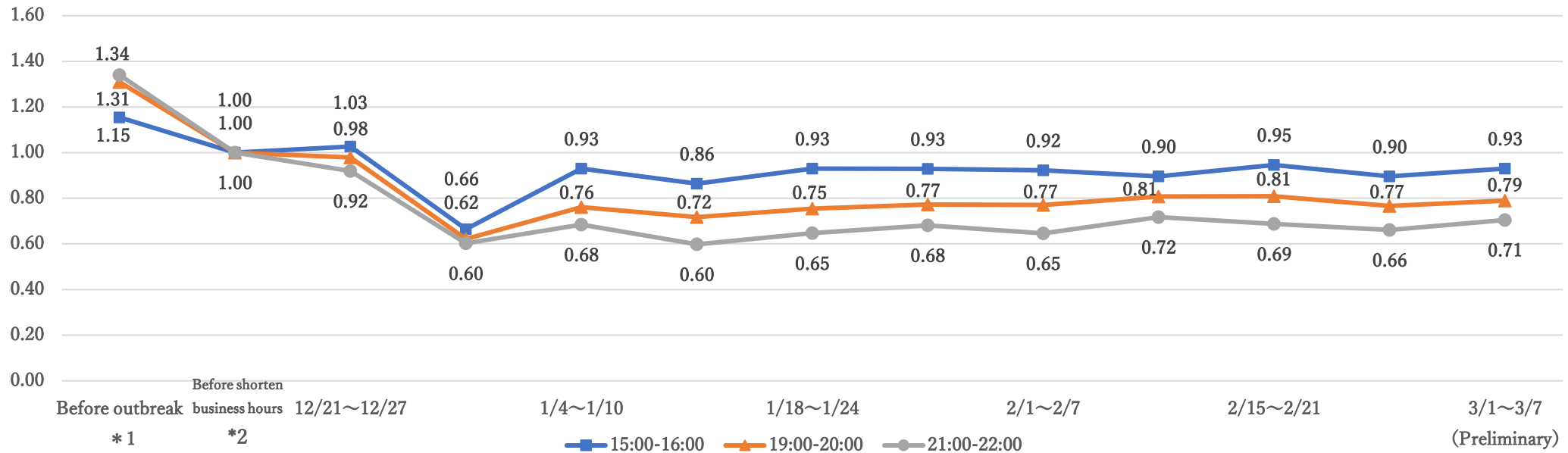
Ref : Total period (Jan. 31, 2020 to Mar. 7, 2021)



# People Flow Data (weekly head count of people flow around JR Chiba Station)



As of Mar. 7



JR Chiba Station Area	Before outbreak *1	Before shorten business hours *2	12/21~12/27	12/28~1/3	1/4~1/10	1/11~1/17	1/18~1/24	1/25~1/31	2/1~2/7	2/8~2/14	2/15~2/21	2/22~2/28	3/1~3/7 (Preliminary)
15:00 - 16:00	1.15	1.00	1.03	0.66	0.93	0.86	0.93	0.93	0.92	0.90	0.95	0.90	0.93
19:00 - 20:00	1.31	1.00	0.98	0.62	0.76	0.72	0.75	0.77	0.77	0.81	0.81	0.77	0.79
21:00 - 22:00	1.34	1.00	0.92	0.60	0.68	0.60	0.65	0.68	0.65	0.72	0.69	0.66	0.71

Data Source: Agoop Inc.

- \*1 Based on the web site of Dept. of Counter COVID-19 infection, Cabinet Secretary, this figure is the ratio of weekly average between Jan. 18 to Feb. 14, 2020 and the base value defined by \*2.
- \*2 The base value is calculated as the weekly average between Dec. 14 to Dec. 20, 2020.
- \*3 Mon.-Sun. is counted as one week and the figure is the ratio of weekly average to the base value \*2.

People flow at any period of time has been suppressed to some degree after the declaration of the state of emergency on Jan. 8. However, there is a further request to refrain from going-out to prevent the spread of infection.