



Chiba City ・ ちば

2013 10月号
英語版
English Edition
October 2013

発行：(公財) 千葉市国際交流協会
Issued by: Chiba City International Association
〒260-0013 千葉市中央区中央 2-5-1 千葉中央ツインビル 2号館 8階
Chiba Chuo Twin Building 2nd Tower 8F
2-5-1 Chuo, Chuo-ku, Chiba City
TEL : 043-202-3000 FAX : 043-202-3111

この情報誌は、下記のアドレスよりダウンロードすることができます。
This newsletter is available at:
<http://www.ccia-chiba.or.jp/005003jyoho/index.html>

Additional information not listed in this publication can be found at the Chiba City International Association's blog which is updated regularly.

Chiba City International Association Blog (URL): <http://cciachiba.blog21.fc2.com/>

CITY NEWS

子育て支援コンシェルジュ Childcare Support Concierge (Help Desk)

The childcare support concierge is a help desk service accepts consultations about child rearing such as child care centers, children's rooms, long-hour childcare services, etc.

Target: parents of incoming grade school students
Consultation Desks:

◇ 中央保健福祉センター こども家庭課
Chuo Health and Welfare Center, Child and Domestic Affairs Section ☎221-2172

◇ 稲毛保健福祉センター こども家庭課
Inage Health and Welfare Center, Child and Domestic Affairs Section ☎284-6137

When: Mon 9:00-15:00; Tue - Fri 9:00-16:00

Please call beforehand prior to the consultation

Inquiry: 保育支援課

Child Care Support Section ☎245-5105

募集 来年4月入園 私立幼稚園の園児

Accepts Application for Private Kindergarten School for April Next Year's Enrollment

On Nov 1 (Fri), the applications for different kindergarten for the next school year starting April starts.

The application form is available from Oct 15 (Tue) at each Kindergarten. Pls. ask for more details.

Inquiry: こども企画課

Children's Future Planning Section ☎245-5659

緊急の場合に簡単に通報できるシステムがあるのを知っていますか?

Are You Aware of Emergency Report System?

The city has the 24-HR Emergency Report System for elderly that can be used in case of emergencies such as sudden illness.

Services: Ambulance, whereabouts confirmation, easy contact with relatives features, etc.

Target: live-alone, 65 years old or older individual
Ask about application process and fees

Inquiry: 高齢福祉課

Senior Citizens' Welfare Section ☎245-5166

千葉市配偶者暴力相談支援センターを開設しました

The City's Domestic Abuse Consultation and Support Center is Now Open

Physical and mental abuse may cause severe damage to the victims.

In order to help victims, the city established the Domestic Abuse Consultation and Support Center. Don't make excuses like "It's a domestic matter"; "I can be more patience" or "It's my fault anyway", etc. Don't suffer alone, Please consult!

Consultation Hotline: ☎245-5110

Mon-Fri 9:00-16:00 (closed every year end-start and holidays)

Fee: Free



Your consultations will be kept confidential.
You need an advance reservation if you wish to consult in person.

Inquiry: ^{けんぜんいくせい}健全育成課 ☎245-5179
Wholesome Child Raising Support Section

エコキャップの ^{かいしゅう}回収に ^{きょうりょく}協力を ^{ねが}お願いします ます！

Please Participate in the Ecocap Campaign

The city supports the Ecocap Movement by collecting bottle caps voluntarily aiming to send out vaccine to the children in need around the world. From October last year to March this year, the city collected 14,770 kg (about 6,351,100 pcs) of caps and from its profit sent out 7,385 polio vaccines as donation. Through the long-lasting support of everyone, the city's Social Welfare Council representing the city, has received an Ecocap Special Award from the NPO Ecocap Movement last June. Anyone can join, please continue to cooperate with this easy voluntarily task.

Inquiry: ^{しゅうしゅうぎょうむか}収集業務課
Waste Collection Operations Section ☎245-5249

^{じてんしゃ}自転車 ^{かいさい}マナーアップフェスタを ^{かいさい}開催します Bicycle Riders' Manner Campaign

For road safety awareness and for the safety of the bicycle riding public, the city holds the Bicycle Rider's Manner Campaign. Although the bicycle related accidents decreased, the bicycle related accident ratio in connection with the number of traffic accidents in the city has been increasing. Riders who are using the right side of the driveway, those talking on mobile phone while riding, traffic rules violators and bad manners driving are causing problems. Learn about bicycle safety rules. Please participate.

When: Oct 19 (Sat) 13:30-17:00

Where: ^{はなみがわりよくちこうつうこうえん}花見川緑地交通公園(美浜区打瀬2)
Hanamigawa Ryokuchi Kotsu Park (Mihama-ku Utase 2)

Please come by bus or train

Events:

- Free bicycle inspection and practical guidance
- Stuntmen re-enacting accidents performances
- Cycling experience through simulator

^{じてんしゃあんぜん}自転車安全のための ^{ごそく}五則を ^{まも}守ろう！

5-Rules to Bicycle Safety Riding

- ① Bicycle must ride in the road
- ② Bicycle must keep on the left side of the road

- ③ Yield to pedestrian when riding on the sidewalks
Bikers must use the road and run slowly
- ④ Observed safety rules
 - no to drink and drive, no to double riding, no to run side by side
 - turn on the lights at night
 - observed traffic lights and temporary halt at intersections

- ⑤ Children must wear helmets
Bicycles similar with other motor vehicles must use the road. Learn about safety rules and ride safely.

Inquiry: ^{しみん}市民サービス課
Citizen's Service Section ☎245-5148

^い行ってみましょう！

Events

^{しみん}「市民の日」に ^{こうきょうしせつ}公共施設を ^{むりょう}無料で ^{かいほう}開放！
Free Use of Public Facilities on Citizen's Day!
October 18th (Fri) is Chiba City's Citizen's Day.

In order for us to appreciate more and be encouraged to participate in the development of our city, free use of public facilities will be held. For more information, please contact the facility directly.

- ① ^{しびじゅつかん}市美術館 (中央区中央3)
Chiba City Museum of Art (Chuo-ku Chuo 3)
Oct 18 (Fri) 10:00-20:00 (reception until 19:30)
☎221-2311
- ② ^{かがくかん}科学館 (中央区中央4 きぼーる内)
Chiba City Museum of Science
(Chuo-ku Chuo 4, Qiball)
Oct 18 (Fri), 19 (Sat), 20 (Sun)
◇ Exhibits 9:00-19:00
◇ Planetarium
*tickets will be distributed from 9:00 on the day
☎308-0511
- ③ ^{きょうどはくぶつかん}郷土博物館 (中央区亥鼻1)
Chiba City Folk Museum (Chuo-ku Inohana1)
Oct 18 (Fri), 19 (Sat), 20 (Sun)
9:00-17:00
(reception until 16:30)
☎222-8231
- ④ ^{ちば}千葉ポートタワー (中央区中央港)
Chiba Port Tower (Chuo-ku Chuoko)
Oct 18 (Fri), 19 (Sat), 20 (Sun)
9:00-19:00 (reception until 18:30) ☎241-0125



- ⑤ ^{どうぶつこうえん わかばくみなもとちょう}
動物公園 (若葉区源町)
Chiba Zoological Park (Wakaba-ku
Minamotocho)
Oct 18 (Fri), 19 (Sat), 20 (Sun) from 9:30-16:30
(reception until 16:00)
◇ There will be giveaways for participants
Zoo Quiz Rally Oct 19 (Sat), 20 (Sun)
from 9:30-16:00
Questionnaire to be distributed at the
gate until 15:00 ☎252-1111

- ⑥ ^{かそりかいづかほくぶつかん わかばくさくらぎ}
加曽利貝塚博物館 (若葉区桜木8)
Kasori Shell Mounds Museum
(Wakaba-ku Sakuragi 8)
Oct 18 (Fri), 19 (Sat), 20 (Sun) from 9:00-17:00
(reception until 16:30) ☎231-0129

- ⑦ ^{さんよう}
三陽メディアフラワーミュージアム
(稲毛海浜公園内)
Sanyo Media Flower Museum
(Inage Kaihin Park)
Oct 18 (Fri), 19 (Sat) 9:30-17:00 ☎277-8776

- ⑧ ^{ちばこうえん ちゅうおうくべんてん}
千葉公園 (中央区弁天3) ポートの無料貸し出し
Chiba Park (Chuo-ku Benten3)
Free boat rentals
Oct 18 (Fri) 9:00-15:30 ☎256-6040

- ⑨ ^{じてんしゃ むりようか}
サイクリングセンター 自転車の無料貸し出し
Cycling Center Free bicycle rentals
Oct 18 (Fri) 9:00-16:00 (reception until 15:00)
◇ 昭和の森 (緑区土気町)
Showa no Mori (Midori-ku Toke-cho)
☎294-3845

- ◇ ^{いなげかいひんこうえん みはまくいそべ}
稲毛海浜公園 (美浜区磯辺2)
Inage Kaihin Park (Mihama-ku Isobe 2)
☎279-3005
Various kinds of bicycles are available at
Inage Kaihin Park (reception until 15:30)

^{かいぎょう しゅうねんきねん まつ}
開業25周年記念ちばモノレール祭り2013
25th Anniversary Celebration: Chiba
Monorail Festival 2013

Come with your families and enjoy fun and
popular events such as trying on monorail
uniforms and taking commemorative photos.
When: Oct 19 (Sat) from 10:00-15:00

Where: ^{ちば}千葉モノレール萩台車両基地
Chiba Urban Monorail Hagidai Train Depot
(5-min. walk from monorail Dobutsukoen Station)
*Will still take place even in the case of rain
*Parking is not available

Inquiry: ^{ちば}千葉モノレール
Chiba Urban Monorail ☎287-8216

^{ゆうぐ ふじさん こうじょうやけい とくべつ}
「夕暮れの富士山と工場夜景」特別クルーズ
Special Cruise: Twilight Mt. Fuji and Nighttime
Factory Scenery

When: Oct 12 (Sat), Oct 13 (Sun),
Oct 14 (Hol), Oct 16 (Wed), Oct 18
(Fri)

Departing Chiba Port at 16:45.
The cruise lasts approximately
40-50 minutes.

Will be cancelled in the case of bad weather.

Limit: First 100 people on the day of the event

Fee: Cruise ticket and admission to Port Tower
Adults: 1,000 yen;

Elementary/middle school students: 500 yen

Apply: ^{ちば}千葉ポートタワー1階団体受付 Chiba Port
Tower 1F, Group Reception from 14:30-16:00

Inquiry: ^{ちば}千葉ポートタワー
Chiba Port Tower ☎241-0125



^{かし}
ハロウインのお菓子づくり

^{のうこう}
～濃厚カボチャプリン～

Halloween Treat-Making
-Rich Pumpkin Pudding-

When: Oct 26 (Sat) from
13:30-16:30

Where: ^{なんぶせいしやうねん}
南部青少年センター
(中央区白旗1)

Nanbu Youth Center (Chuo-ku, Shirahata 1)
Target: Third-year elementary to third-year junior
high school students

Limit: First 24 people

Fee: 400 yen

Apply/Inquiry: ^{なんぶせいしやうねん}
南部青少年センター
Nanbu Youth Center ☎264-8995
Closed on Mondays and holidays



^{こ とくしょ}
子ども読書まつり

Children's Reading Festival

To help introduce children to the joy of reading,
municipal libraries will be hosting various events.

*Please contact each library for information on
events or how to apply

When: Oct 19 (Sat) from 15:00-15:30

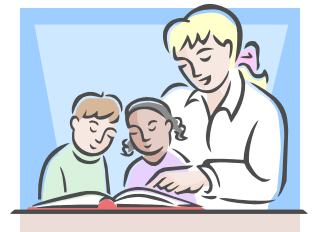
Story time in the atrium:

'English Story Time'

Inquiry: ^{ちゅうおうとしやかん}
中央図書館

Central Library ☎
287-3980

Closed Mondays/the
third Thursday each
month



Inquiry for other events:

Closed Mondays, holidays, and the third Thursday each month

Miyako Library	☎233-8333
Hanamigawa Library	☎250-2851
Hanamigawa Danchi Annex	☎250-5111
Inage Library	☎254-1845
Wakaba Library	☎237-9361
Midori Library	☎293-5080
Mihama Library	☎277-3003
Utase Annex	☎272-4646

生涯学習センターの催し 映画上映会 Movie Screenings at the Lifelong Learning Center

- Family Anime Screening: 'Urashima Taro' and more Oct 12 (Sat)
- Thursday Masterpiece: 'Au Revoir Les Enfants' ('Sayonara, Kodomotachi')

Oct 17 (Thu)

When: ① and ② shown twice at 10:00 and 14:00

Limit: ① First 80 people at each showing

② First 250 people at each showing

(Doors open 30 minutes prior to each showing)

Inquiry: 生涯学習センター(中央区弁天3)

Lifelong Learning Center (Chuo-ku, Benten3) ☎207-5820

Closed the 4th Monday each month

サンスポ千葉 マリンマラソン 参加者募集 Recruiting Participants for the Sanspo Chiba Marine Marathon

Currently recruiting participants for the Sanspo Chiba Marine Marathon taking place on Sunday, Jan. 19, 2014.

Events: Family (2 km), 10 km, half marathon, etc.

For more information, please pick up an application at sports facilities in the city or call to request one from the marathon office.

To request an application: ☎03-6800-4519

Inquiry: スポーツ振興課

Sports Promotion Section ☎245-5966



保健・相談

Health and Consultations

市立病院の「女性外来」

Women's Clinics at Municipal Hospitals

Exams by a female physician are available for those with common health concerns exclusive to women. A phone reservation is required. (Exams and reservations are not available on holidays and year-end/New Year's).

◇ 青葉病院(中央区青葉町) Aoba Hospital (Chuo-ku, Aobacho)

Exam days: Every Wednesday from 9:00-12:00

Reservation-only hotline: Mon-Fri from 12:00-15:00 ☎227-0002

Inquiry: 青葉病院 地域連携室 ☎227-1131

Aoba Hospital Regional Cooperation Office

◇ 海浜病院(美浜区磯辺3) Kaihin Hospital (Mihama-ku, Isobe3)

Exam days: Every Thursday from 13:40-15:00

Reservation-only hotline: Mon-Fri from 9:00-16:00 ☎277-8014

Inquiry: 海浜病院 地域連携室 ☎277-8014

Kaihin Hospital Regional Cooperation Office

女性のための健康相談

Health Consultations for Women

Have an interview consultation with a female physician about mental or physical health concerns related to female hormones, etc.

When: Oct 23 (Wed) from 13:15-15:20 (reservation required)

Where: 市保健所(美浜区幸町1)

Municipal Public Health Office (Mihama-ku, Saiwaicho1)

Apply/Inquiry: 健康支援課

Health Support Section ☎238-1220

外国人のための無料法律相談

Legal Consultation for Foreigners

When: Oct 21 (Mon) from 13:00-16:00

Where: 千葉市国際交流プラザ 会議室

(中央区中央2) Chiba City

International Communication Plaza, Conference Room (Chuo-ku Chuo 2)

Limit: First 4 people.

Please consult in advance if an interpreter is desired.

Apply/Inquiry: 千葉市

国際交流協会 Chiba

City International

Association ☎202-3000

